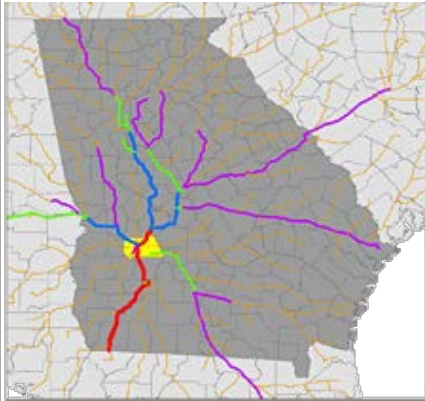


# SUMTER COUNTY LOGISTICS SPOTLIGHT

## SUMTER COUNTY ROAD FREIGHT

(DATA SOURCE: IHS GLOBAL INSIGHT, CENTER ANALYSIS)



### IN-BOUND TRUCK FREIGHT:

TRUCK FREIGHT TONS: **676,439**  
TRUCK FREIGHT VALUE: **\$451,199,969**  
TRUCK FREIGHT MOVES: **39,356**

#### Inbound Freight:

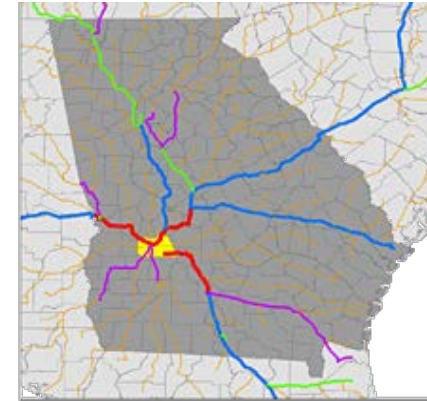
Those goods that originated outside the State of Georgia and had a destination inside Sumter County.

### OUT-BOUND TRUCK FREIGHT:

TRUCK FREIGHT TONS: **617,051**  
TRUCK FREIGHT VALUE: **\$1,331,527,867**  
TRUCK FREIGHT MOVES: **45,224**

#### Outbound Freight:

Those goods that originated inside Sumter County and had a destination outside the State of Georgia.



### INTRA-GEORGIA TRUCK FREIGHT:

TRUCK FREIGHT TONS: **326,857**  
TRUCK FREIGHT VALUE: **\$270,509,232**  
TRUCK FREIGHT MOVES: **62,765**

#### Intra-Georgia Freight:

Those goods with both an origin and destination inside the State of Georgia, one of which was Sumter County.

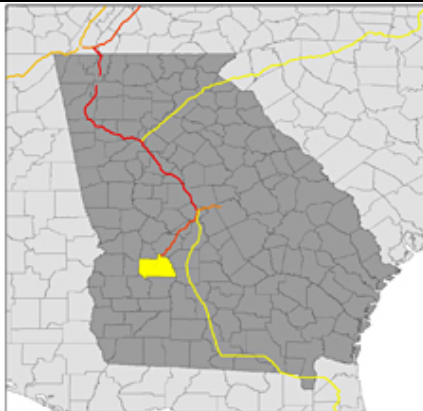
### GEORGIA ROAD FREIGHT HIGHLIGHTS:

- Cargo is **within two or fewer days by truck from 80% of the U.S.** industrial and commercial markets.
- **100% of the Top 50 Trucking Companies** utilize Georgia's 1,244 miles of interstate highways
- **Ranked 9<sup>th</sup> nationally** with **450,000** commercially licensed Georgia truck drivers
- Georgia issues **51% of all the CDL certificates in the southeast**, and **1 out of every 8** nationally.
- **5.9 million** tons of freight is transported on Georgia roads every week.
- Metro Atlanta is **ranked 6th in ground freight movement** in the Nation
- Georgia maintains **1,200 miles of interstate** highways and **20,000 miles** of federal and state highways.
- Over **40% of North American manufacturing** locations are within a 500 mile radius of Atlanta



#### TRUCK TRANSIT TIMES



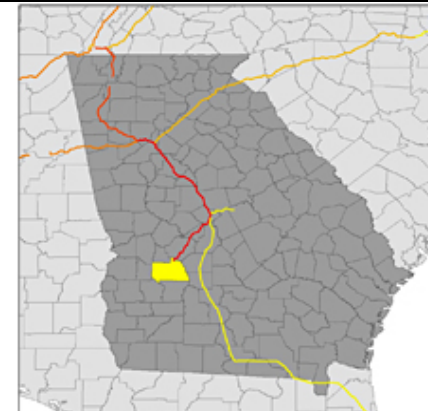


## IN-BOUND RAIL FREIGHT:

RAIL FREIGHT TONS: **253,439**  
 RAIL FREIGHT VALUE: **\$43,633,961**  
 RAIL FREIGHT MOVES: **2,557**

## OUT-BOUND RAIL FREIGHT:

RAIL FREIGHT TONS: **126,167**  
 RAIL FREIGHT VALUE: **\$115,870,773**  
 RAIL FREIGHT MOVES: **1,305**



Sumter County was also connected to **302,478 tons** of freight moved by rail **INTRA-GEORGIA**. (where origin and destination were both inside the state). This tonnage was moved by **3,041 rail cars** and had a value of **\$266,996,688**.

## SUMTER COUNTY RAIL ASSETS:

Served by CSX: **yes** Served by NS: **yes**

Short line Rail Services Include: **Heart of Georgia, Georgia Southwestern**

Terminals/yards in county: **NONE**

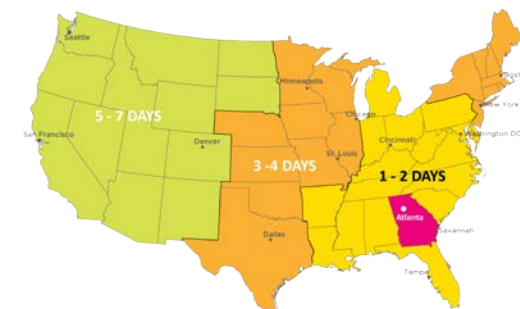
**NOTE: NS, HOG, and GSWR shortline in county; CSX accessible via HOG shortline in Crisp County and via NS line in Macon County**

## GEORGIA RAIL FREIGHT HIGHLIGHTS:

- Georgia is **home to 26 freight railroads** (2 class-1's, and 24 short-line railroads)
- Home to the **largest intermodal facility** on the east coast.
- Georgia's is the origin of **39 million tons** of rail freight every year.
- Georgia **has the largest railroad network in the Southeast**, and ranked:
  - **7th highest** in the Nation for total rail miles (*4,680 miles of track*)
  - **5th most** rail tons terminating in State
  - **13th** for number of railroads in U.S.
- Nationwide, **each freight rail job supports 4.5 jobs** elsewhere in the economy.
- Each **\$1 billion** in new rail investment **creates over 17,000 jobs**.



[CLICK IMAGE FOR FOR FULL-SIZE .PDF]



RAIL TRANSIT TIMES FROM GEORGIA

# SUMTER COUNTY OCEAN FREIGHT

<b>Import Volume:</b>	<b>321 TEU's</b>
<b>Import Tons:</b>	<b>3,838 Tons</b>
<b>Export Volume:</b>	<b>1,821 TEU's</b>
<b>Export Tons:</b>	<b>200,022 Tons</b>

Represents FY13 totals of **SUMTER COUNTY** cargo thru Georgia's Ports ONLY (Data Source: GPA, PIERS)

LEARN MORE:  
[GAPORTS.COM/MOREIMPACT](http://GAPORTS.COM/MOREIMPACT)

## GEORGIA OCEAN FREIGHT HIGHLIGHTS:

- The Port of Savannah is the **largest single container terminal in North America**
- Georgia's deep-water ports and inland barge terminals **support more than 352,000 jobs** throughout the state
- The Port of Savannah is the **Nation's fastest-growing top container port**, is the **4th busiest in the USA** and **2nd busiest on the East Coast**.
- The Port of **Brunswick is #1 for new import vehicles in the US**, the **2nd busiest port in the US for total ro/ro volume**, and is the **2nd largest grain facility** on the East Coast.
- In 2013, the Port of Savannah was the **2nd busiest U.S. container port for exports** of American goods. (behind only the Port of LA)
- The Port handles nearly **40% of the Nation's containerized poultry exports** and is **#1 for refrigerated exports** on the East & Gulf Coasts.
- The Port of Savannah **moved 3.14 million TEU's; 29 million tons; and 700,000 auto & machinery units** in FY2014.
- Savannah hosts **the most global shipping services among US Southeast Coast and Gulf ports**, for a total of **37** weekly services.

# SUMTER COUNTY WAREHOUSING & DISTRIBUTION

## GEORGIA W&D HIGHLIGHTS:

- 47 of the Top 50 most successful 3PL's (94%) are either headquartered or have significant operations in Georgia.
- 2 of the 10 largest 3PL's in North America are hq'd in GA (#2 & #7)
- There are 230 retail distribution centers in Georgia with over 175 retailers; 28 of which have more than 1 million sq.ft. each.
- Georgia is home to 245 million sq.ft. of W&D space in over 953 facilities statewide. 14 million sq.ft. of which is within 2.5 hours of the Port of Savannah.
- Cold storage capability totals 14 million sq.ft. in nearly 80 facilities statewide
- 23 of the top 85 3PL's in food logistics have operations in Georgia
- Georgia is home to 28 DEA Certified pharmaceutical distribution facilities
- 2 of the 5 largest private warehouse operators in North America are headquartered in GA (#1 & #5)
- Georgia is home to 6 of the top 50 cargo carriers, including the world's number one carrier UPS.
- Of the top 25 global 3PL's, 90% have operations in Georgia.

Sumter is home to a **total of 2** warehousing and distribution facilities.

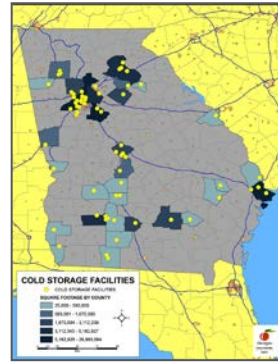
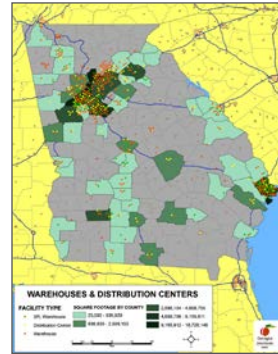
With a **total capacity of 686,000 sq/ft**,  
These companies **employ 137 people** in Sumter County alone.

### THE LARGEST OF THESE FACILITIES INCLUDE:

- #1) Georgia Cold Storage / 620,000 Sq.ft.
- #2) Odum Sales Co / 66,000 Sq.ft.

Sumter is also home to a **total of 1** cold-storage facilities.  
These facilities are a critical component for food, pharmaceutical, and many other temperature sensitive supply chains.

Also, for a listing of currently available buildings in Sumter County: [CLICK HERE](#)



## GEORGIA AIR CARGO

Georgia has 105 public use airports, 10 of which have notable air cargo operations. Statewide, the aviation industry (which includes air cargo) contributes: **\$62.6B state/federal economy;** **471,000 employees;** **\$17.8 billion payroll.**

Measured by cargo tonnage, the two largest in Georgia are located in **Atlanta and Albany...**

### Atlanta Hartsfield-Jackson International Airport:

- ATL handles 98% of the State's annual air freight volume
- World's busiest passenger airport, with 2,500 arrivals and departures and 250,000 passengers per day
- Has a direct impact of more than \$32.5 billion for metro Atlanta
- Over 80% of U.S. consumers are within 2 hour flight time from Atlanta
- 10<sup>th</sup> largest in the U.S. for cargo, and 31<sup>st</sup> in the world
- ATL is the only air cargo perishables complex of its size in the Southeast
- 2 million sq.ft. of on-terminal cargo handling/warehousing capacity.
- Foreign Trade Zone #26 is directly connected to the airport, and is a U.S. Fish and Wildlife port of entry

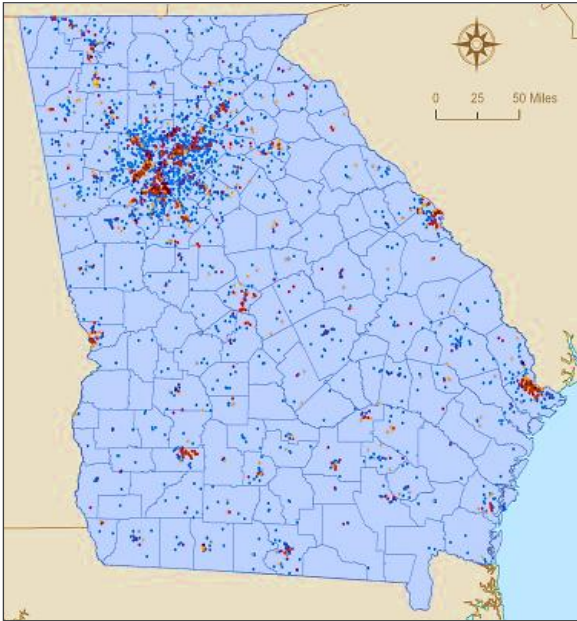
### Southwest Georgia Regional Airport (Albany):

- Primarily used by UPS to move their freight to the main UPS world hub in Louisville, Kentucky.
- In 2011, UPS moved 9.7 million pounds of cargo into and 5.7 million pounds of cargo out of Southwest Georgia Regional Airport.
- In 2012 the Southwest Georgia Regional Airport contributed: \$54.5 million in local economic impact, 548 jobs and \$17.1 million in payroll.

### AIR TRANSIT TIMES



# SUMTER COUNTY LOGISTICS INDUSTRY PROFILE



[CLICK IMAGE FOR FOR FULL-SIZE .PDF]

The logistics industry is a dynamic “ecosystem” whose core is essentially made up of companies that **provide** logistics services (*i.e. trucking, rail, software, etc.*) and those that **consume** them (*i.e. manufacturers, wholesalers, distribution centers, etc.*)

## Sumter County is home to:

**14 logistics providers** who employ a total of **115** in the County and generate **\$48,051,000** in annual sales.

**122 logistics-enabled companies** who employ an additional **2,819** Georgians and generate **\$1,908,657,000** in annual sales.

To learn more about the many services these providers offer and connect with them quickly... visit the free: **Logistics Provider Directory** located on: **WWW.GEORGIALOGISTICS.COM**

## GEORGIA ECOSYSTEM HIGHLIGHTS:

- Georgia is home to **12,300 providers** of logistics services
- Providers of logistics services **employ over 152,000** and together generated **\$20.1 Billion in sales** in 2013.
- **In 2013 GA ranked #1** for: Most Competitive State; Best State for Business; Infrastructure; Workforce (Site Selection Magazine & CNBC)
- Georgia **ranks 5th in the Nation** for logistics and supply chain employment
- More than **24 logistics related associations** have chapters in Georgia
- **17 Fortune 500 companies** are headquartered in Georgia
- **70% of the top 20** supply chain management software providers have operations in Georgia. **25% are headquartered here** including: Manhattan Associates, Infor, Logility, Aldata Solutions, and CDC Software.
- There are **400 innovative technology companies** that provide solutions to the logistics industry in the State.

# LOGISTICS EDUCATION IN SUMTER COUNTY



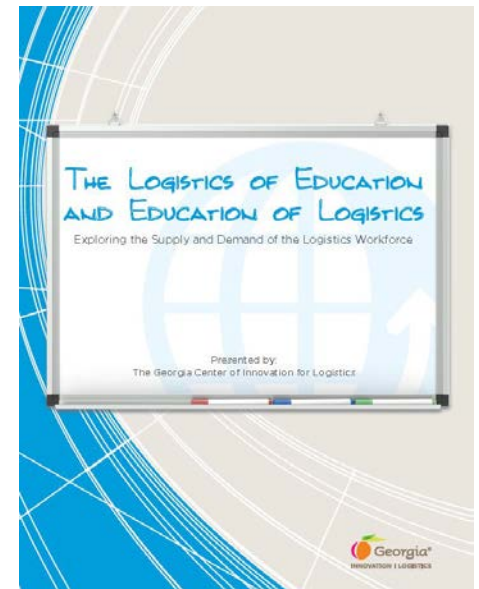
## SUMTER LOGISTICS EDUCATION OFFERINGS:

The rapid growth of the **logistics-enabled industry** has created a strong demand for a **well trained workforce** to meet the needs. Georgia’s schools offer in total **100 different logistics related education offerings** throughout the State. ([Link to full report on right.](#))

These offerings range widely from certificate to PhD programs, as well as the topics included in the programs.

## Some of the logistics educational offerings nearest to Sumter County include:

- Georgia Southwestern State University
- South Georgia Technical College
  - Albany State University
  - Albany Technical College



[CLICK IMAGE FOR FOR FULL-SIZE .PDF]

# SUMTER COUNTY & GEORGIA LEADERSHIP



[CLICK IMAGE FOR FOR FULL-SIZE .PDF]

## SUMTER COUNTY

To read more about Sumter County on the *New Georgia Encyclopedia*: [CLICK HERE](#)

To download a comprehensive labor profile of Sumter County: [CLICK HERE](#)

Sumter County is located in Georgia's **Service Delivery Region #8** (SEE MAP BELOW). There are a wide range of professionals waiting to help companies of all types and sizes. These include the **local leadership of Sumter County** and the team at the **State level**, just to name a few. Below are a few key points of contact to get you started exploring Sumter County:

**Barbara Grogan, Executive Director, Americus-Sumter Payroll Development Authority**

Email: [bgrogan@aspda.com](mailto:bgrogan@aspda.com), Call: 229-924-7007 or: [VISIT HERE](#)

### GEORGIA DEPARTMENT OF ECONOMIC DEVELOPMENT CONTACTS:

- Center of Innovation for Logistics: Emily Schrenk - Industry Coordinator - [eschrenk@georgia.org](mailto:eschrenk@georgia.org)
- Region #8 Project Manager: **Candice Scott - 478.333.2487 - [cscptt@georgia.org](mailto:cscptt@georgia.org)**
- Statewide Logistics Project Director: Annie Baxter - [abaxter@georgia.org](mailto:abaxter@georgia.org)
- International Trade Assistance: **Dawn Townsend - [dtownsend@georgia.org](mailto:dtownsend@georgia.org)**

## This County Logistics Spotlight was compiled by the Georgia Center of Innovation for Logistics



### Logistics

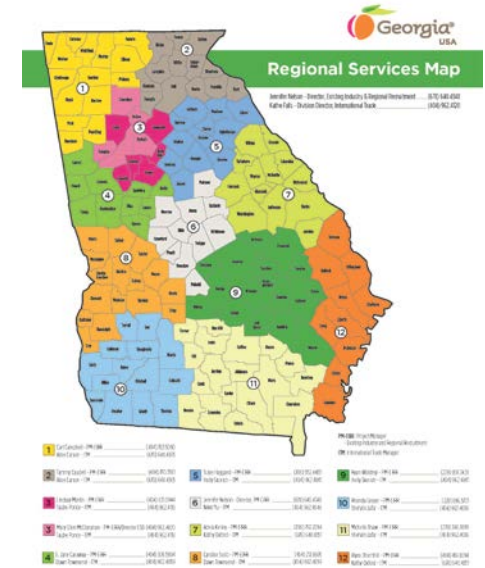
As an industry focused division of the Georgia Department of Economic Development The Center is the **leading statewide resource for fueling logistics industry growth and global competitiveness**. The Center provides the technical industry expertise, collaborative research, and partnerships needed to help the industry **connect, compete, and grow globally**. The Center provides a wide range of services and expertise to companies and communities across Georgia **at no cost**.

**To learn more, or for details on how we can help:**

**visit on the web:** [www.georgialogistics.com](http://www.georgialogistics.com)

**email us:** [eschrenk@georgia.org](mailto:eschrenk@georgia.org)

**call us:** 912.966.7842



[CLICK IMAGE FOR FOR FULL-SIZE .PDF]